

Assembly manual for CUE DEE HF yagi antennas.

Antenna type..... *Dec 3*

Read the manual thoroughly before starting the assembly.

Serial no:

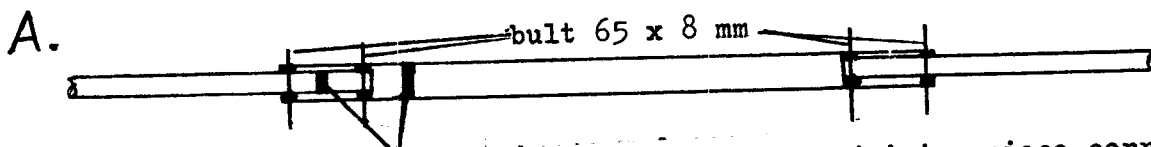
Boom The boom is delivered as follows:

Antenna type	number of parts	dimension
328 - 528	2	50 mm
628 G	2	50 mm
628 - 728G	3	50 + 60 mm
321 - 421	2	50 mm
521 - 621G	3	50 + 60 mm
314G - 414G	2	50 mm
414 - 514G	3	50 + 60 mm
614G	5	50, 60 + 75 mm

On the antennas with two boom pieces there is a joining aluminium part fastened to one of the boom ends. To join these use the two supplied 55 x 8 mm bolts.



On the antennas with three boom pieces join the pieces according to the colour marking.

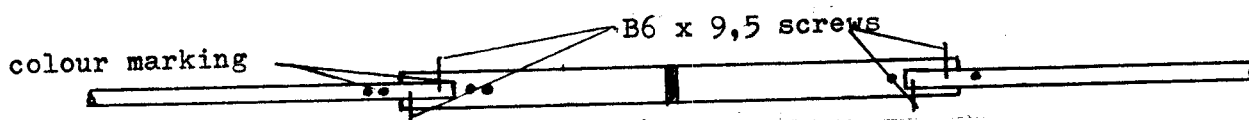


The colour marking on the joining piece corresponds to the one nearest on the boom

The Elements are delivered in different bundles, make sure to assemble one element at the time to prevent mixing the parts. The elements are joined by telescoping the end parts into the middle part according to the colour marking:

Black	reflector	Green	2:nd director
Yellow	driver element	Red	3:rd "
Brown	1:st director	Blue	4:th "
		Orange	5:th "

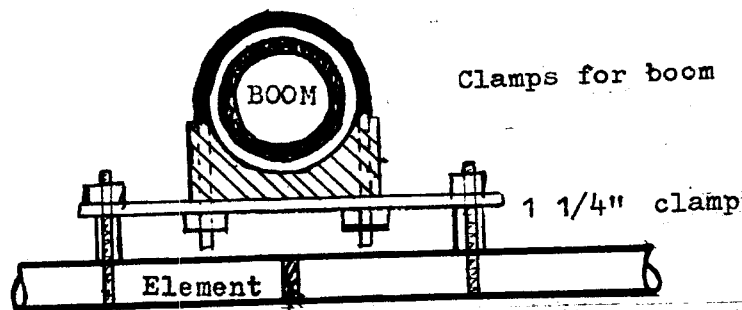
NB! USE CONTACT GREASE ON EVERY JOINT !!



Use contact grease on every joint.

The boom element plates are 200 x 60 x 5 mm and have got colour marking for the element they belong to. Fasten the element by using 2 pcs 1 1/4" clamps. The elements are designed to be fastened under the boom (for duobanders see note). Make sure to put the element under the right colour marking on the boom. For assembly of the driver element (Yellow) and the gamma match see next page.

For proper performance all elements should be in line when you have put them on the boom.



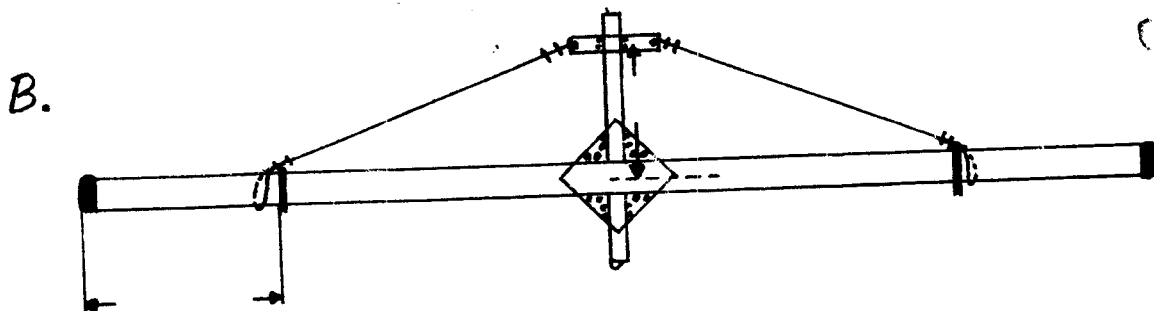
Tape mark indicating the middle of the element.

When the antenna has been assembled weigh it in the palm of your hand to find the balance of weight where the boom-mast plate should be put. (Stainless steel plate with holes drilled for the boom and 50 mm mast).

Guying of boom.

The guywire support plate delivered with the antenna should be fastened on the mast at the distance shown in the sketch bellow. To fasten the guy wire to the boom make a loop around the boom at a clamp fastened at the distance shown in the sketch bellow. NB! one clamp at each side of the boom. Use wire clamps at each end. The guy wire will withstand a force of 225 kg and will not affect the performance of the antenna.

Pull the guy wire through the eyes in the support plate and fasten it with a wire clamp at each end. To get the boom straight you can either lower the boom or raise the guy plate.



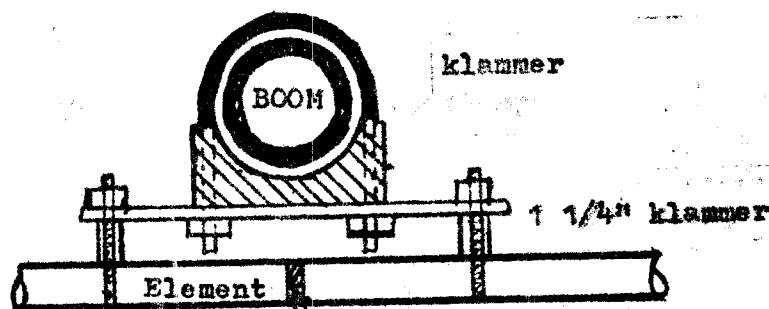
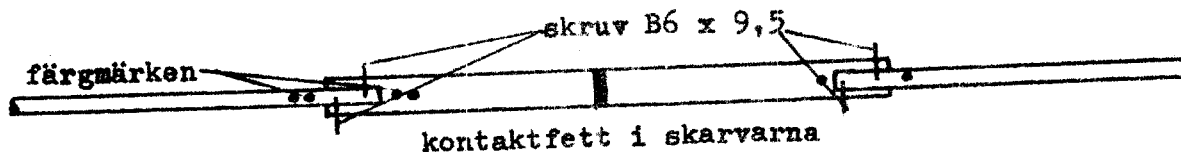
Bommen levereras i tre delar. En mittdel av 60 mm rör och två ytterdelar av 50 mm rör med påsvetsade skarvmuffar med tejpmarkering mellan muffarna. Dessa markeringar visar i vilken ända av 60 mm röret som skarven skall sitta. Ytterdelarna fästes med två 65 x 3 mm bultar i vardera ändan. Följande färgmarkering gäller för bom - element och bom/element plattor.

reflektor	svart	2:a direktor	grön
drivelement	gul	3:dje "	röd
1:a direktor	brun	4:e "	blå
		5:e "	orange

För stagning av bommen se ett bifogat blad. Montera elementen mitt under markeringen på bommen.

Elementen är packeterade var för sig, montera ett element i taget genom att teleskopa in ytterdelarna i mittdelen. OBS! färgmarkeringen. KOM IHÅG KONTAKTFETT PÅ ELEMENTSKARVARNA ! Fäst sedan ytterdelarna med 2 plåtskruvar per sida.

Bom/element plattorna är 200 x 60 x 5 mm och har färgmarkering för det element de tillhör. Fäst elementen med 1 1/4" klammer i plattan och montera därefter elementet under bommen vid tejpmarkeringen. Se skiss. För montering av gammamatch på det gula elementet se baksidan av detta papper.



Tejp som markerar mitten på elementet
OBS! alla element måste vara i samma plan för att antennen skall fungera riktigt.

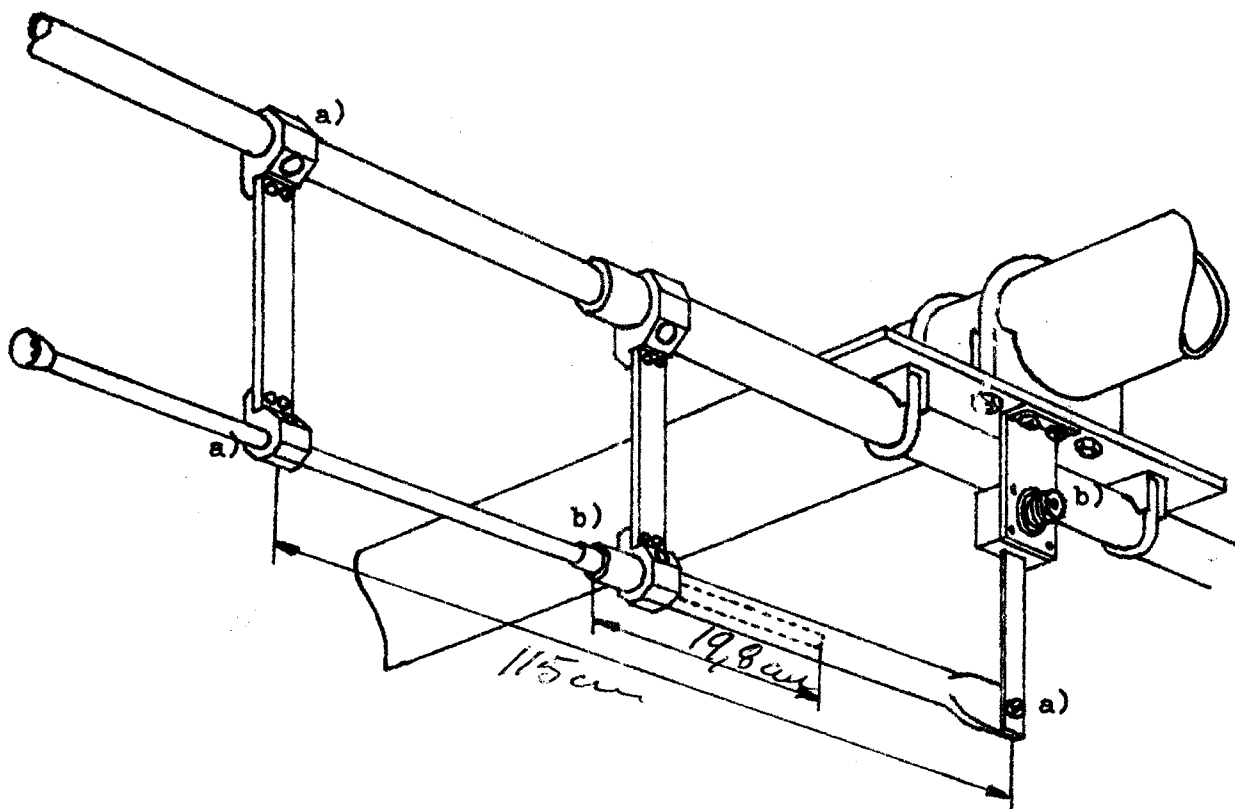
När antennen är färdigmonterad väges den i händerna för att finna jämnvikten - där monteras den bifogade bom/mast plattan (rostfri platta med hål för bom och 50 mm maströr).

Montering av gammamatch på CUE DEE antenner

Gammamatchen monteras på det gula elementet (drivelementet) innan ytterdelarna skruvas fast. Gammadetaljerna finns i plastpåsen.

1. Fäst mittdelen av elementet på bom/element plattan med 2 st 1 1/4" klammer.
2. Fäst koaxbygel i bom/element plattan med de två skruvarna som sitter i bygel.
3. Montera isolatorn på den på mittdelen fastsatta bygel. 2 st skruvar finns fastsatta på isolatorn.
4. Montera kortslutnings bygel vid det angivna måttet på nedanstående skiss. Om bygel "går trögt" bänd försiktigt med en skruvmejsel.
5. Dra isär gammaröret (packeterat med drivelementet) och fäst 19 mm röret genom 19 mm bygel i isolatorn och på koaxbygelns förlängning. Skruv för detta finns på gammaröret. Fäst elementets ytterdelar. Se framsidan.
6. Montera 12 mm röret genom 12 mm bygel (kortslutning) och skjut in det i 19 mm röret enligt bifogat mått. Se nedan, observera att måttet räknas från 19 mm rörets början och inte från isolatorns.

Gammamatchen är nu färdigmonterad och grovinställd, för finjustering kopplas en SWR mätare in och kortslutning resp. inskjutning justeras för minsta SWR. När detta funnits läggs kontaktfett på vid a) och isolera med eltejp vid b). för att undvika väta i teflonisolatorn. Isolera också koaxkontakten vid matningen.



Notes on the duobanders.

When putting the element to the boom the longer elements should be under the boom and the shorter ones above the boom.

	duo 2	duo 3
Under the boom	14 MHz	21 MHz
Above the boom	21 MHz	28 MHz

The spacing is coloured marked on the boom with wide and narrow tape.

Wide tape for duo2G 14MHz and for duo3 21 MHz

NB! The gamma matches should be placed on opposite sides of the boom with the top one pointing upwards.

DANGER ! Keep children and pets away from the antenna when you assemble it. Do not put it up close to power lines.

+++++

Parts included with the antenna:

NB! All parts are not included with all antennas, just the ones marked.

- 1 Boom
- 1 Boom joints
- 4 Bolt 55 x 8 mm with M 8 nut
- Bolt 65 x 8 mm with nut
- Bolt 80 x 8 mm with nut
- 1 Boom mast plate 2"
- Boom mast plate 2½"
- 8 Elements
- 2 Gamma match including all parts
- 32 Screws B6 x 9,5 stainless steel for elements
- 16 Clamps 1 1/4"
- 20 Clamps 2"
- Clamps 2½"
- Contact grease
- Guy wire support plate including parts
- Guy wire
- Wire clamps

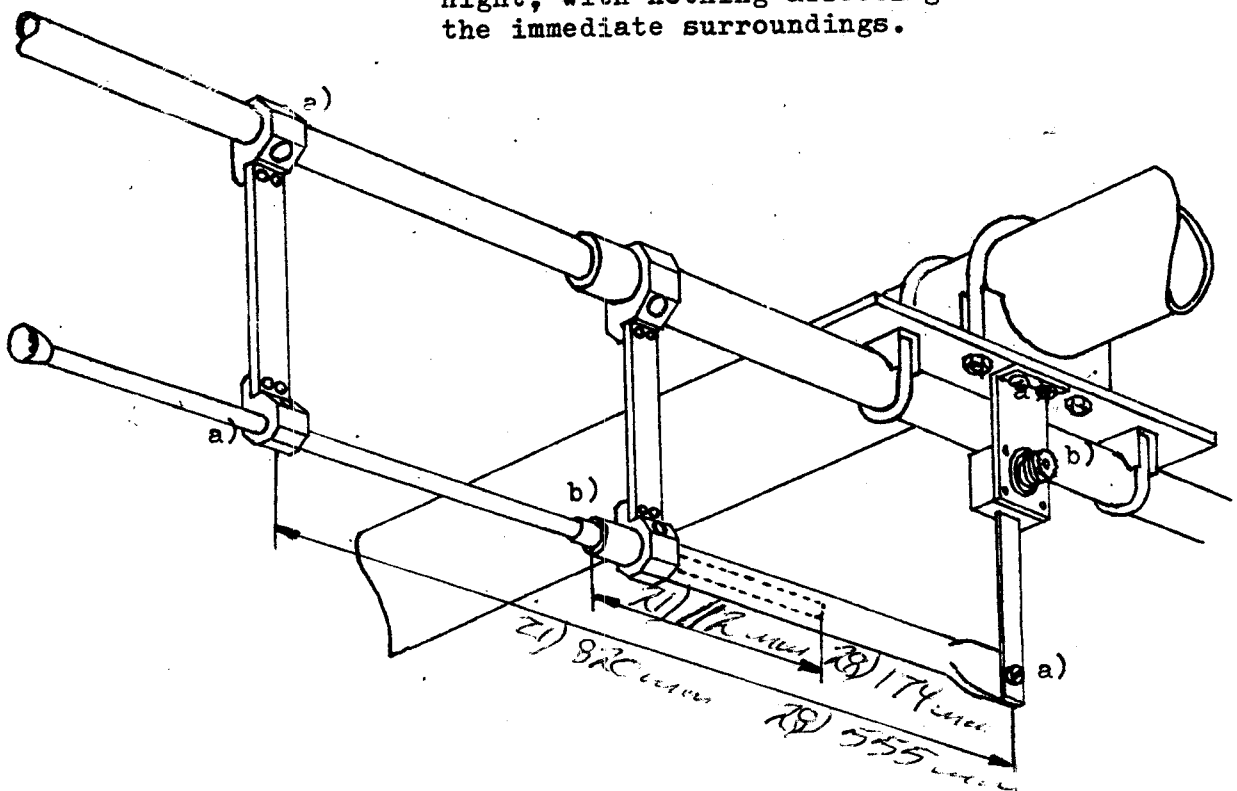
Assembly of Gamma Match on CUB DEE HF yagi antennas.

The gamma match is fastened to the driver element (yellow element) before the end parts are mounted. All gamma parts are in the plastic bag or taped to the driver element.

1. Mount the element on the boom-element piece by using 2 1 1/4" clamps.
2. Mount the coaxial connector assembly to the boom-element piece by using the 2 M4 screws supplied with the boom-element piece. Use contact grease.
3. Mount the insulator on the bracket fastened to the middle piece of the element. 2 screws supplied with the insulator.
4. Mount the shortening bar at the given distance (see sketch bellow). If the bar is tight bend carefully with a screw driver.
5. Pull the gamma tube apart (delivered with the driver element) and fasten the 19 mm tube through the 19 mm bracket of the insulator and to the arm of the coaxial cable assembly. Use supplied screw and locking nut. Mount the end parts of the element.
6. Mount the 12 mm tube through the 12 mm bracket (shortening bar) and push it into the 19 mm tube according to the measurement bellow. NB! the distance is measured from the beginning of the 19 mm tube and not from the insulator.

The gamma match is now assembled and roughly adjusted. To get the proper setting connect a SWR instrument and adjust shortening bar and the 12 mm tube's setting inside the 19 mm tube to minimum SWR. When you have found the minimum SWR apply contact grease at points a) and isolate with electric tape at b) to prevent moisture in the PTFE insulator. Also isolate the coaxial connector at the feed point.

NB! Before you start adjusting the gamma, mount the driver element on its place on the boom. The dimensions given bellow have been noted on 18 mtrs high, with nothing affecting the antenna in the immediate surroundings.



Boom Assembly

Begin with fitting the elements to the boom pieces, if any element is out of line turn the plastic boom-element piece 180°.

4144A The boom is delivered in one piece.

10144A The boom is delivered in 3 **parts** with telescoping joining pieces fastened at the end of each part to be joined. Use 5 x 35 mm screws when the parts are put together. Make sure all elements are in line before tightening these screws. Black boom mark at the rear (reflector) and yellow mark at the front.

15144A &

15X144A The antenna is delivered with the boom in 4 parts and the parts are joined in the same way as 10144A. Black boom mark at the rear and violet mark at the front.

All antennas should have each successive director (from rear to front) either the same length or shorter than the prior director. If not so - check the colour marking of the elements towards the marking of the boom. Also check if you have joined the boom parts in right order.

The antennas are designed to have the elements on the upper side and when the coaxial cable is fitted, pull it down between the driver element and the first director and fasten it with electric tape along the lower side of the boom.

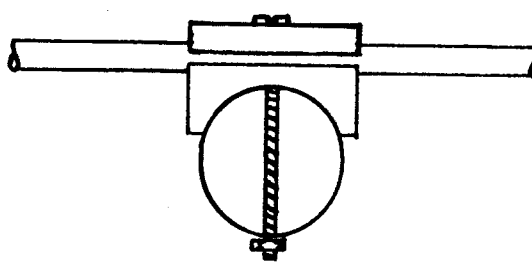
Watch out for moisture in the coaxial connector, isolate with tape.

Assembly manual for CUE DEE VHF antennas

Read the manual thoroughly before starting the assembly.

General The antenna is delivered with the boom drilled for 3 mm screw. All elements are drilled in the middle and should be fastened with a 3 x 50 mm screw. This screw goes through the element - washer, the element, the boom-element piece and the boom and is locked with a M 3 nut.

Fitting of element to the boom.



The reflector and all directors are made of 6 mm Aluminium rod. The driver element is made of 12 mm Aluminium tube. The driver element also have the gamma match, adjusted for 50 ohm coaxial cable, fastened to it.

Colour marking of boom and elements.

Boom	Antenna type	4144A	10144A	15 & 15X144A
rear	Black	reflector	reflector	reflector
	Brown	1 st	1 + 2 nd	1 st director
	Green	2 nd	3 + 4 th	2 nd "
	Red	-	5 + 6 th	3 + 4 th "
	Yellow	-	7 + 8 th	5 + 6 th "
	Blue	-	-	7 + 8 th "
	White	-	-	9 + 10 th "
	Orange	-	-	11 + 12 th "
front	Violet	-	-	13 th "

NB! The driver element is not colour marked. For the elements there are corresponding colour marks on the boom. Fit all elements on the same side as the marking on the boom.

Stacking of CUE DEE VHF antennas.

Stacking distance:	4144A	10144A	15144A	15X144A
Horizontal	1.4 mtrs	3.3 mtrs	4.3 mtrs	4.3 mtrs
Vertical	1.1	3.1	4.0	4.3

NB! The antennas should be exactly above and/or beside each other. The gamma matches should be pointing in the same direction, i.e. when you are watching the antennas from behind, all horizontal gamma matches should be to the right side of the booms.

For phasing the antennas we recommend a " power divider " or a phasing harness made out of 75 ohm coaxial cable. Make sure all cables in the phasing harness is exactly the right length.

For using the 15X144A in circular polarisation we recommend CUE DEE FK C1.

DANGER! MAKE SURE TO KEEP CHILDREN AND PETS AWAY FROM THE ANTENNA WHEN YOU ASSEMBLE IT OR SERIOUS EYE DAMAGE MAY OCCUR!

WHEN PUTTING THE ANTENNA TO THE TOP OF YOUR TOWER MAKE SURE TO KEEP THE ANTENNA AWAY FROM ELECTRIC LINES. DO NOT INSTAL THE ANTENNA CLOSE TO POWER LINES!

Parts included with the antenna.

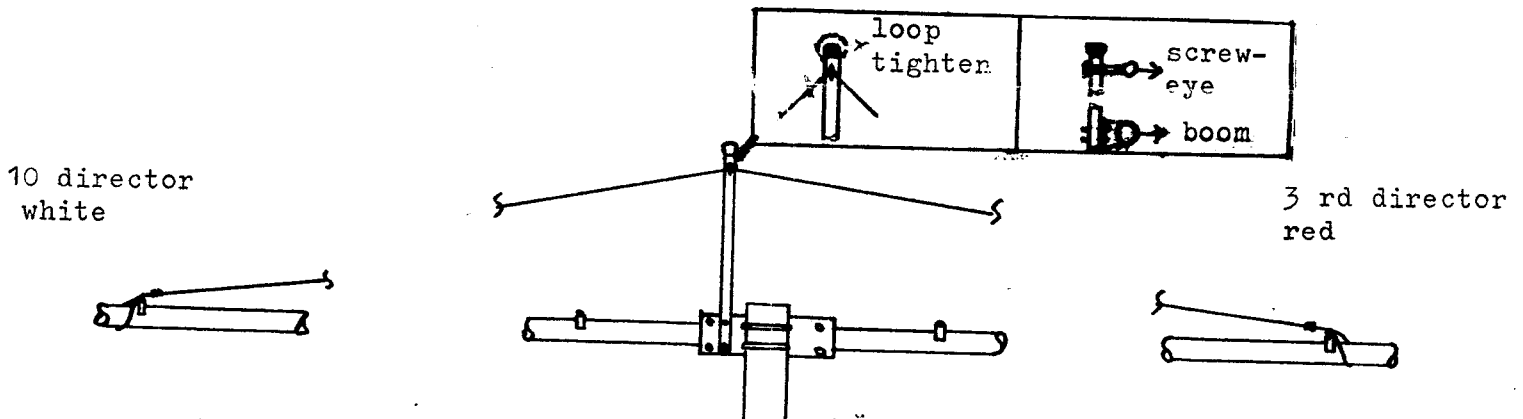
Part	4144A	10144A	15144A	15X144A
Boom	1	3	4	4
Boom - mast plate	1	1	1	1
Guy tube aluminium	-	-	1	-
Guy tube fibre glass	-	-	-	1
Guy wire	-	-	1	1
Wire clamp	-	-	2	2
Clamp 1 1/4"	2	2	2	2
Clamp 2"	2	2	2	2
Boom - element piece 6 mm	3	9	14	28
Element washer	3	9	14	28
Boom - element piece 12 mm	1	1	1	2
Driver element	1	1	1	2
Screw M 3 x 50 mm	4	10	15	30
Screw M 5 x 30 mm	-	-	2	2
Screw M 5 x 35 mm	-	2	3	3
Nut M 3	4	10	15	30
Nut M 5 locking	-	2	5	5

Guy Wire Assembly.

10144A Does not need any guying.

15144A & A cord for guying the boom is delivered with the antenna.

15X144A 15144A has got a guy tube made out of 19 mm Aluminium and 15X144A has got a tube made out of 19 mm fibre glass. These tubes have got a screw-eye fastened to one of the ends. The other end should be fitted to the boom-mast plate with 2 pcs 5 x 30 mm screws in the 2 holes with 5 mm thread. These 2 screws are locked at the opposite side (boom side) with 2 pcs M 5 locking nuts. Weigh the antenna on the hand to find the position of balance of the antenna. Fasten the boom - mast plate with 2 pcs 1 1/4" clamps. The cord is fitted according to the sketch bellow, by forming a loop around the boom at the 3rd horizontal director (red) and locking it with a wire clamp. Then pull the cord through the screw-eye twice so that a loop is formed to prevent the cord from slipping. Form another loop at the 10th horizontal director (white) and lock it with a wire clamp. To get the boom straight stretch the guy cord at the wire clamps.

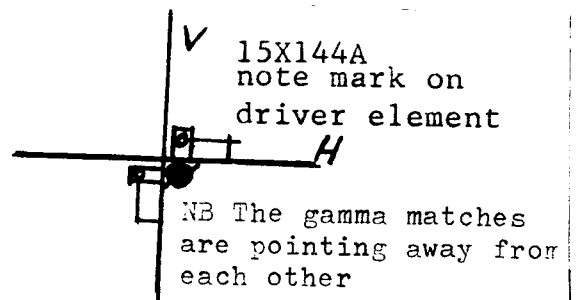
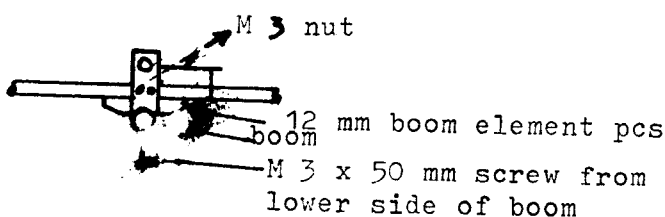


Driver Element

The driver element is pretuned for 50 ohm coaxial cable and will not need any adjustment. Simply connect your cable and you will be on the air.

15X144 When fitting the driver element to 15X144A make sure to put them as the sketch bellow. The gamma matches are pointing away from each other.

Fitting of driver element to the boom.

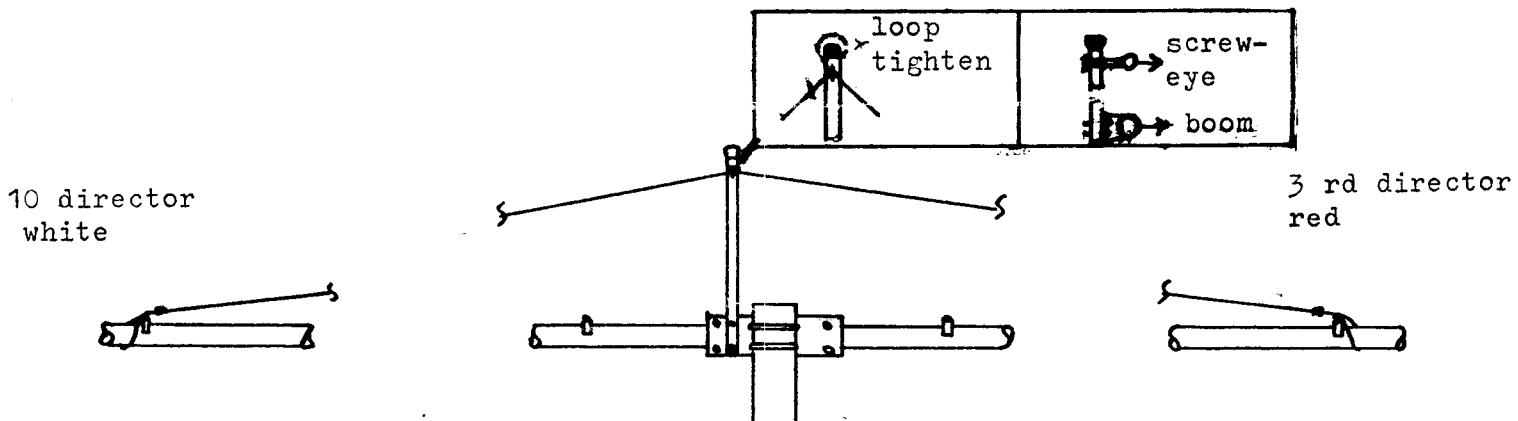


Guy Wire Assembly.

10144A Does not need any guying.

15144A & A cord for guying the boom is delivered with the antenna.

15X144A 15144A has got a guy tube made out of 19 mm Aluminium and 15X144A has got a tube made out of 19 mm fibre glass. These tubes have got a screw-eye fastened to one of the ends. The other end should be fitted to the boom-mast plate with 2 pcs 5 x 30 mm screws in the 2 holes with 5 mm thread. These 2 screws are locked at the opposite side (boom side) with 2 pcs M 5 locking nuts. Weigh the antenna on the hand to find the position of balance of the antenna. Fasten the boom - mast plate with 2 pcs 1 1/4" clamps. The cord is fitted according to the sketch bellow, by forming a loop around the boom at the 3rd horizontal director (red) and locking it with a wire clamp. Then pull the cord through the screw-eye twice so that a loop is formed to prevent the cord from slipping. Form another loop at the 10th horizontal director (white) and lock it with a wire clamp. To get the boom straight stretch the guy cord at the wire clamps.

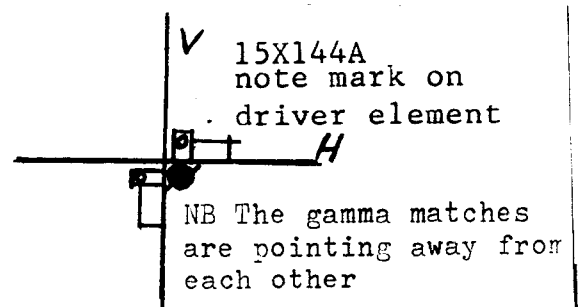
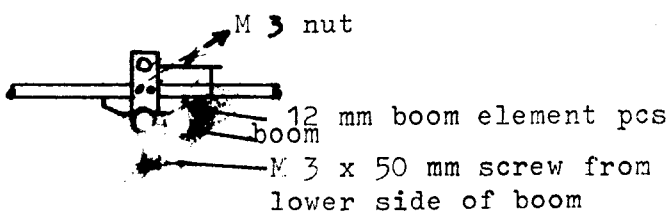


Driver Element

The driver element is pretuned for 50 ohm coaxial cable and will not need any adjustment. Simply connect your cable and you will be on the air.

15X144 When fitting the driver element to 15X144A make sure to put them as the sketch bellow. The gamma matches are pointing away from each other.

Fitting of driver element to the boom.



Stacking of CUE DEE VHF antennas.

Stacking distance:	4144A	10144A	15144A	15X144A
Horizontal	1.4 mtrs	3.3 mtrs	4.3 mtrs	4.3 mtrs
Vertical	1.1	3.1	4.0	4.3

NB! The antennas should be exactly above and/or beside each other. The gamma matches should be pointing in the same direction, i.e. when you are watching the antennas from behind, all horizontal gamma matches should be to the right side of the booms.

For phasing the antennas we recommend a " power divider " or a phasing harness made out of 75 ohm coaxial cable. Make sure all cables in the phasing harness is exactly the right length.

For using the 15X144A in circular polarisation we recommend CUE DEE FK C1.

DANGER! MAKE SURE TO KEEP CHILDREN AND PETS AWAY FROM THE ANTENNA WHEN YOU ASSEMBLE IT OR SERIOUS EYE DAMAGE MAY OCCUR!
WHEN PUTTING THE ANTENNA TO THE TOP OF YOUR TOWER MAKE SURE TO KEEP THE ANTENNA AWAY FROM ELECTRIC LINES. DO NOT INSTAL THE ANTENNA CLOSE TO POWER LINES!

Parts included with the antenna.

Part	4144A	10144A	15144A	15X144A
Boom	1	3	4	4
Boom - mast plate	1	1	1	1
Guy tube aluminium	-	-	1	-
Guy tube fibre glass	-	-	-	1
Guy wire	-	-	1	1
Wire clamp	-	-	2	2
Clamp 1 1/4"	2	2	2	2
Clamp 2"	2	2	2	2
Boom - element piece 6 mm	3	9	14	28
Element washer	3	9	14	28
Boom - element piece 12 mm	1	1	1	2
Driver element	1	1	1	2
Screw M 3 x 50 mm	4	10	15	30
Screw M 5 x 30 mm	-	-	2	2
Screw M 5 x 35 mm	-	2	3	3
Nut M 3	4	10	15	30
Nut M 5 locking	-	2	5	5

4/21/928 Luos 3 1/4

Currentings/alter

740	574 (534)	538 (499)	514 (478)	500 (465)	644
	(354)	685 (518)	634 (496)	(182)	
125	84	72	79	34	122
57	187	2185	2.69	303	2.57
					2.5
					322

21 wt 82 in 1 1/2

Born 5, 7m
6m in

28 wt 535 in 1 3/4

582	513	521	506	494	1989	1984	479	474

210 800 411 1121 211 200 200 200

Assembly manual for CUE DEE HF yagi antennas.

Antenna type..... *Duo*

Serial no:

Read the manual thoroughly before starting the assembly.

Boom The boom is delivered as follows:

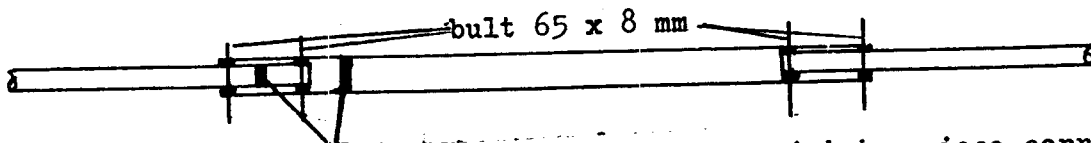
Antenna type	number of parts	dimension
328 - 528	2	50 mm
628 G	2	50 mm
628 - 728G	3	50 + 60 mm
321 - 421	2	50 mm
521 - 621G	3	50 + 60 mm
314G - 414G	2	50 mm
414 - 514G	3	50 + 60 mm
614G	5	50, 60 + 75 mm

On the antennas with two boom pieces there is a joining aluminium part fastened to one of the boom ends. To join these use the two supplied 55 x 8 mm bolts.



On the antennas with three boom pieces join the pieces according to the colour marking.

A.

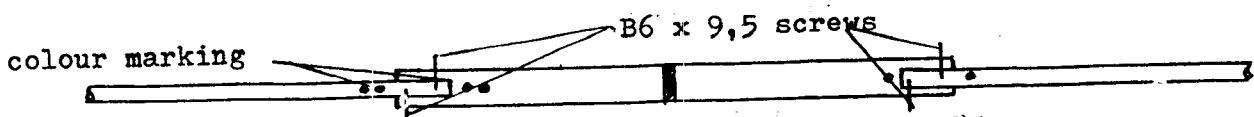


The colour marking on the joining piece corresponds to the one nearest on the boom

The Elements are delivered in different bundles, make sure to assemble one element at the time to prevent mixing the parts. The elements are joined by telescoping the end parts into the middle part according to the colour marking:

Black	reflector	Green	2:nd director
Yellow	driver element	Red	3:rd "
Brown	1:st director	Blue	4:th "
		Orange	5:th "

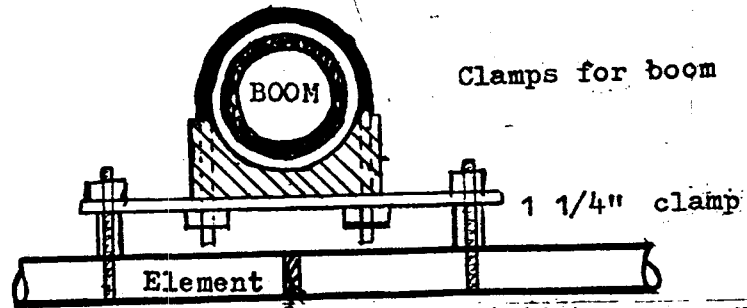
NB! USE CONTACT GREASE ON EVERY JOINT !!



Use contact grease on every joint.

The boom element plates are 200 x 60 x 5 mm and have got colour marking for the element they belong to. Fasten the element by using 2 pcs 1 1/4" clamps. The elements are designed to be fastened under the boom (for duobanders see note). Make sure to put the element under the right colour marking on the boom. For assembly of the driver element (Yellow) and the gamma match see next page.

For proper performance all elements should be in line when you have put them on the boom.



Tape mark indicating the middle of the element.

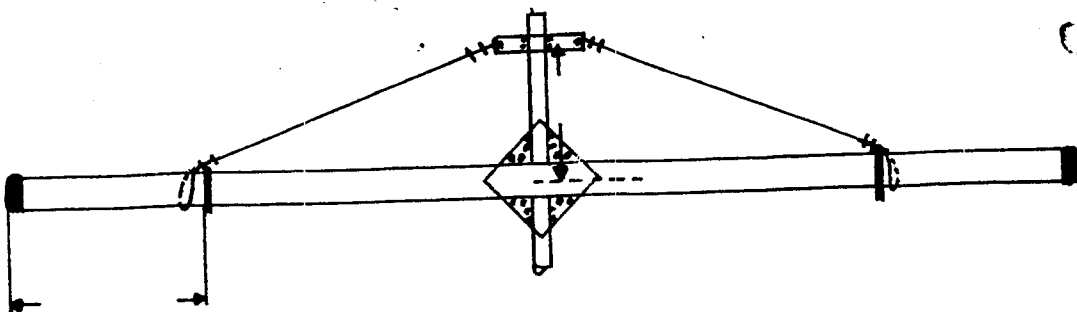
When the antenna has been assembled weigh it in the palm of your hand to find the balance of weight where the boom-mast plate should be put. (Stainless steel plate with holes drilled for the boom and 50 mm mast).

Guying of boom.

The guywire support plate delivered with the antenna should be fastened on the mast at the distance shown in the sketch bellow. To fasten the guy wire to the boom make a loop around the boom at a clamp fastened at the distance shown in the sketch bellow. NB! one clamp at each side of the boom. Use wire clamps at each end. The guy wire will withstand a force of 225 kg and will not affect the performance of the antenna.

Pull the guy wire through the eyes in the support plate and fasten it with a wire clamp at each end. To get the boom straight you can either lower the boom or raise the guy plate.

B.



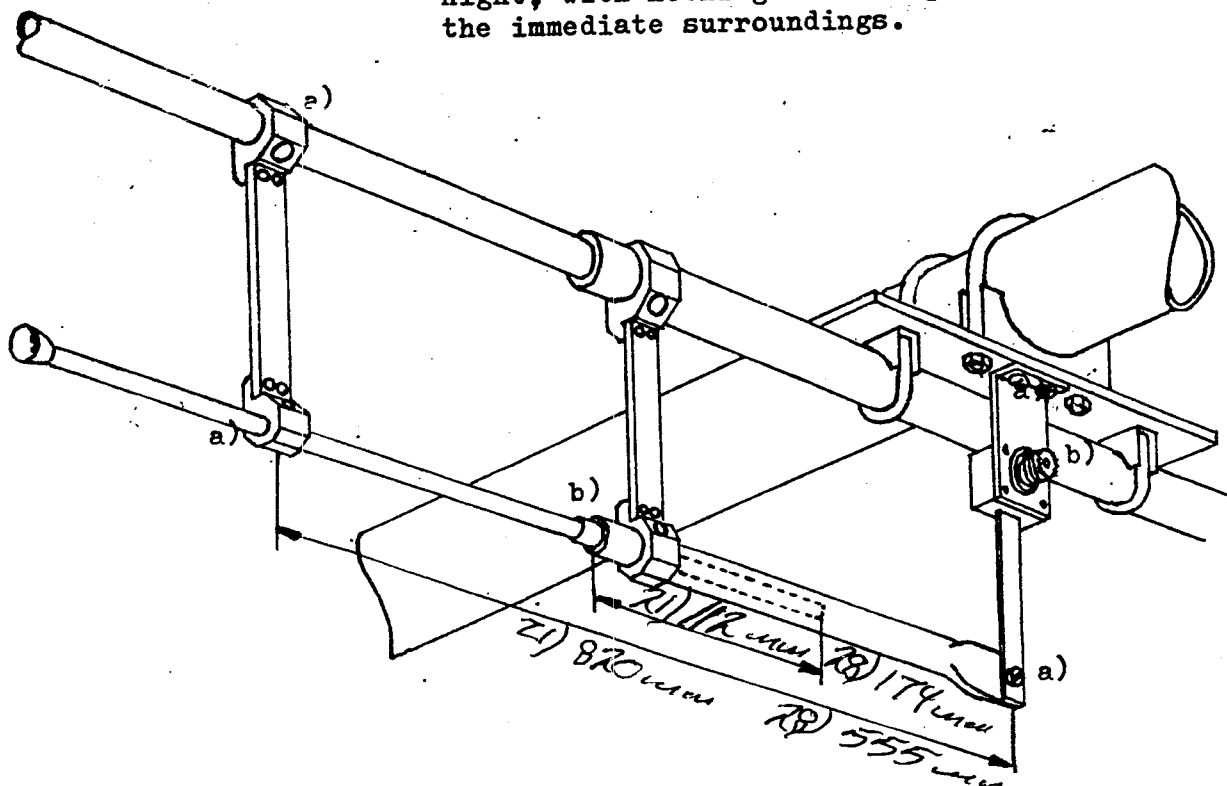
Assembly of Gamma Match on CUB DEE HF yagi antennas.

The gamma match is fastened to the driver element (yellow element) before the end parts are mounted. All gamma parts are in the plastic bag or taped to the driver element.

1. Mount the element on the boom-element piece by using 2 1 1/4" clamps.
2. Mount the coaxial connector assembly to the boom-element piece by using the 2 M4 screws supplied with the boom-element piece. Use contact grease.
3. Mount the insulator on the bracket fastened to the middle piece of the element. 2 screws supplied with the insulator.
4. Mount the shortening bar at the given distance (see sketch bellow). If the bar is tight bend carefully with a screw driver.
5. Pull the gamma tube apart (delivered with the driver element) and fasten the 19 mm tube through the 19 mm bracket of the insulator and to the arm of the coaxial cable assembly. Use supplied screw and locking nut. Mount the end parts of the element.
6. Mount the 12 mm tube through the 12 mm bracket (shortening bar) and push it into the 19 mm tube according to the measurement bellow. NB! the distance is measured from the beginning of the 19 mm tube and not from the insulator.

The gamma match is now assembled and roughly adjusted. To get the proper setting connect a SWR instrument and adjust shortening bar and the 12 mm tube's setting inside the 19 mm tube to minimum SWR. When you have found the minimum SWR apply contact grease at points a) and isolate with electric tape at b) to prevent moisture in the PTFE insulator. Also isolate the coaxial connector at the feed point.

NB! Before you start adjusting the gamma, mount the driver element on its place on the boom. The dimensions given bellow have been noted on 18 mtrs high, with nothing affecting the antenna in the immediate surroundings.



Notes on the duobanders.

When putting the element to the boom the longer elements should be under the boom and the shorter ones above the boom.

The spacing is coloured marked on the boom with wide and narrow tape.

	duo 2	duo 3
Under the boom	14 MHz	21 MHz
Above the boom	21 MHz	28 MHz

wide tape for duo2G 14MHz and for duo3 21 MHz

NB! The gamma matches should be placed on opposite sides of the boom with the top one pointing upwards.

DANGER ! Keep children and pets away from the antenna when you assemble it. Do not put it up close to power lines.

+++++

Parts included with the antenna:

NB! All parts are not included with all antennas, just the ones marked.

- Boom
- Boom joints
- Bolt 55 x 8 mm with M 8 nut
- Bolt 65 x 8 mm with nut
- (..... Bolt 80 x 8 mm with nut
- Boom mast plate 2".
- (..... Boom mast plate 2½"
- Elements
- Gamma match including all parts
- Screws B6 x 9,5 stainless steel for elements
- Clamps 1 1/4"
- Clamps 2"
- Clamps 2½"
- Contact grease
- Guy wire support plate including parts
- Guy wire
- Wire clamps

50 mm balm

Lib 3



Svart stor

130

|| Peter

214

Eul stor

286

|| Lita

365

Brun sto

399

|| Peter

5,21

Grön Peter

5,3

|| stor

5,7m

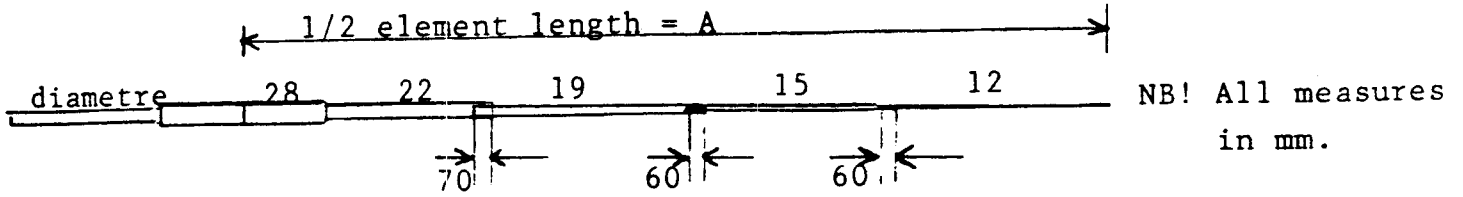
all 3 + 0,7

alt 5 + 0,7

Da ska den
sitta på

The elements are delivered with the middle part pre-fabricated. Make sure to assemble one element at the time to prevent mixing the parts. The elements are joined by telescoping the end parts into the middle part as shown below:

6 28 MHz



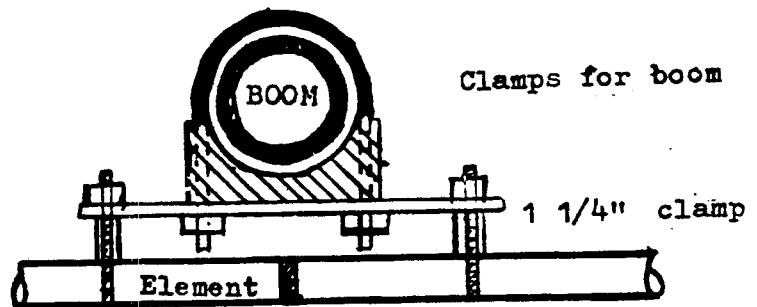
Use a 3 mm drill and the supplied B6 x 9.5 at every joint. Do not forget to apply contact grease. Telescope the tubes as shown above.

Element colour	A	28-22	19	15	12
Refl. Black	2800	1490	490	740	1015
Driver Yellow	2590	1490	490	740	805
1:st dir Brown	2570	1490	490	740	735
2:nd dir Green	2450	1490	490	740	665
3:rd dir Red	2410	1490	490	740	625
4:th dir Blue	2380	1490	490	740	595
5:th dir Orange	1490	490	740

If any of the dimensions do not fit into the other dimension any treatment, filing etc., by you will not void your 5 years guarantee.

The boom element plates are 200 x 60 x 5 mm and have got colour marking for the element they belong to. Fasten the element by using 2 pcs 1 1/4" clamps. The elements are designed to be fastened under the boom (for duobanders see note). Make sure to put the element under the right colour marking on the boom. For assembly of the driver element (Yellow) and the gamma match see next page.

For proper performance all elements should be in line when you have put them on the boom.



Tape mark indicating the middle of the element.

When the antenna has been assembled weigh it in the palm of your hand to find the balance of weight where the boom-mast plate should be put. (Stainless steel plate with holes drilled for the boom and 50 mm mast).

50 mm bsm

luc 3

130

Svart stor

|| liten

214

Eul stor

286

|| liten

365

Brun sto

399

|| liten

521

Grön liten

563

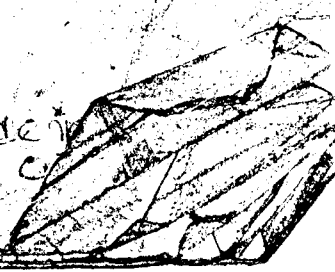
|| stor

57m

alt 5 + 0,7

alt 5 + 0,7

De ska de
sitta på



4/9

2" R	10	swart
2 1/2" D	322	gult
2 1/2" Z	547	bruin
2" Z	790	groen

50 60 50 cm

Boort + 4 + 2

Merw 2,5 meter

→ all 5 + 3

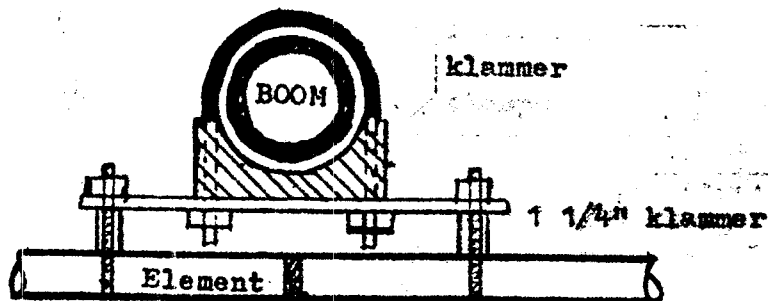
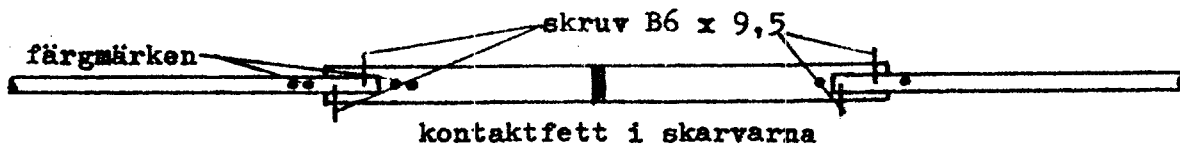
Bommen levereras i tre delar. En mittdel av 60 mm rör och två ytterdelar av 50 mm rör med påsvetsade skarvmuffar med tejpmarkering mellan muffarna. Dessa markeringar visar i vilken ända av 60 mm röret som skarven skall sitta. Ytterdelarna fästes med två 65 x 8 mm bultar i vardera ändan. Följande färgmarkering gäller för bom - element och bom/element plattor.

reflektor	svart	2:a direktor	grön
drivelement	gul	3:dje "	röd
1:a direktor	brun	4:e "	blå
		5:e "	orange

För stagning av bommen se ett bifogat blad. Montera elementen mitt under markeringen på bommen.

Elementen är packeterade var för sig, montera ett element i taget genom att teleskopa in ytterdelarna i mittdelen. OBS! färgmarkeringen. KOM IHÅG KONTAKTFETT PÅ ELEMENTSKARVARNA ! Fäst sedan ytterdelarna med 2 plåtskruvar per sida.

Bom/element plattorna är 200 x 60 x 5 mm och har färgmarkering för det element de tillhör. Fäst elementen med 1 1/4" klammer i plattan och montera därefter elementet under bommen vid tejpmarkeringen. Se skiss. För montering av gammamatch på det gula elementet se baksidan av detta papper.



Tejp som markerar mitten på elementet
OBS! alla element måste vara i
samma plan för att antennen skall
fungera riktigt.

När antennen är färdigmonterad väges den i händerna för att finna jämnvikten -
där monteras den bifogade bom/mast plattan (rostfri platta med hål för bom
och 50 mm maströr).

Montering av gammamatch på CUE DEE antenner

Gammamatchen monteras på det gula elementet (drivelementet) innan ytterdelarna skruvas fast. Gammadetaljerna finns i plastpåsen.

1. Fäst mittdelen av elementet på bom/element plattan med 2 st 1 1/4" klammer.
2. Fäst koaxbygeln i bom/element plattan med de två skruvarna som sitter i bygeln.

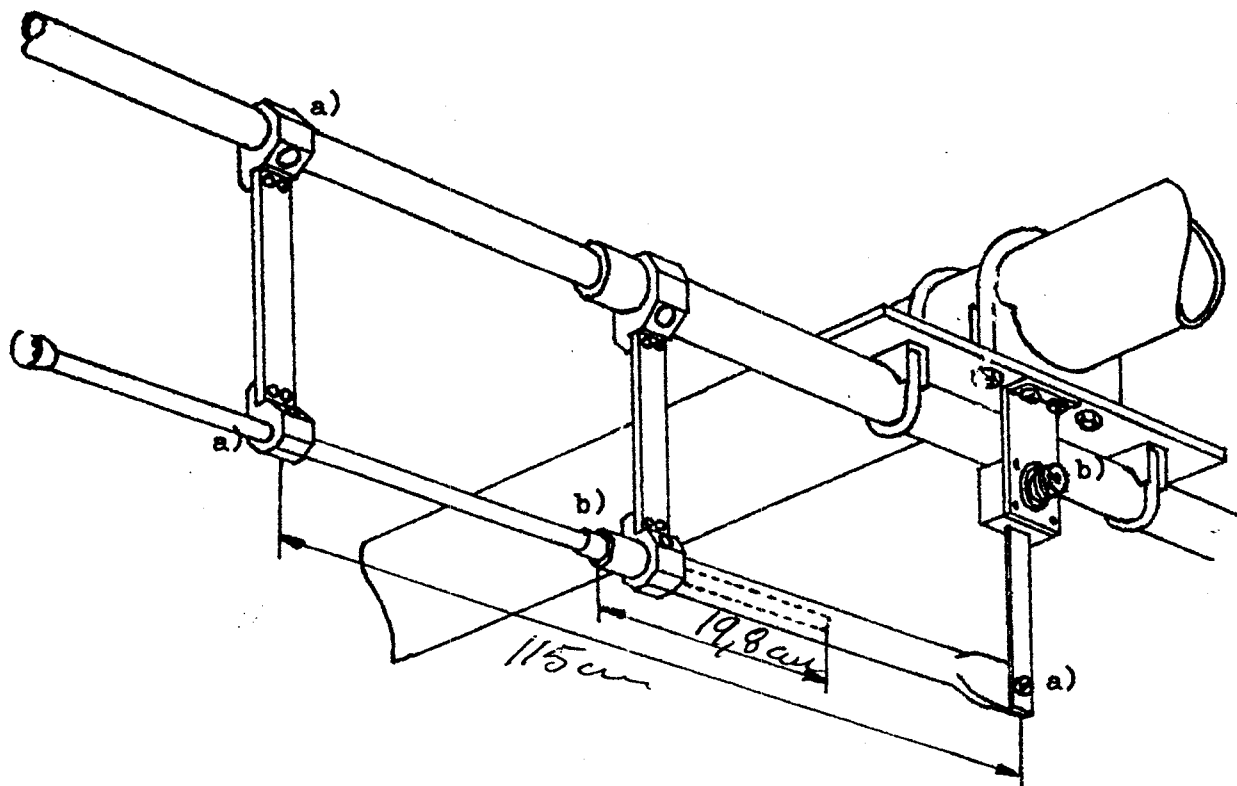
3. Montera isolatorn på den på mittdelen fastsatta bygeln. 2 st skruvar finns fastsatta på isolatorn.

4. Montera kortslutnings bygeln vid det angivna måttet på nedanstående skiss. Om bygeln "går trögt" bänd försiktigt med en skruvmejsel.

5. Dra isär gammarröret (packterat med drivelementet) och fäst 19 mm röret genom 19 mm bygeln i isolatorn och på koaxbygeln förlängning. Skruv för detta finns på gammarröret. Fäst elementets ytterdelar. Se framsidan.

Montera 12 mm röret genom 12 mm bygeln (kortslutning) och skjut in det i 19 mm röret enligt bifogat mått. Se nedan, observera att måttet räknas från 19 mm rörets början och inte från isolatorns.

Gammamatchen är nu färdigmonterad och grovinställd, för finjustering kopplas en SWR mätare in och kortslutning resp. inskjutning justeras för minsta SWR. När detta funnits läggs kontaktfett på vid a) och isolera med eltejp vid b). för att undvika väta i teflonisolatorn. Isolera också koaxkontakten vid matningen.



2" R 10

2 1/2" D 322

2 1/2" Z 547

3" Z 790

over 1
gate
brown
green

50 60 50 mm

Bomb + 4 + 2

show 2.5 water

→ all 5 + 3

20 M ANTENN:

BOM

- 1: 75 mm rör 6,01 m 2 st
 - 2: 60 mm rör 6,00 m 2 st/instopp 105 cm
 - 3: 75 mm 2,45 m
- Cue Dee svetsar. Prov lämnas.
-

Elementlängder:

Reflektor

1. Mittendel längd 3,01 Rör 31 mm 6 st/till alla/
2. Rör inne i mittendel
Längd 4,00 m Rör 25 m/m 6 st/alla/
3. Längd 0,99,5 m (Inkl 5 cm instopp) Rör 22m/m 12 st/alla
4. Längd 96 cm Rör 19 m/m (instopp 5,5cm)
5. Längd 80 cm Rör 15 m/m (instopp 7,3 cm) 6 st
6. Längd 95,0 cm (instopp 5,5) Rör 12 m/m 6 st
7. Längd 73,5 cm (instopp 5,5) Rör 19 m/m 2 st
8. Längd 67 cm, (instopp 5 cm) Rör 19 m/m 6 st
9. Längd 63 cm (instopp 6 cm) Rör 15 m/m 6 st
10. Längd 75,5 (instopp 6 cm) Rör 12 m/m 6 st

Obs. Mått Jaakko i pärm.

